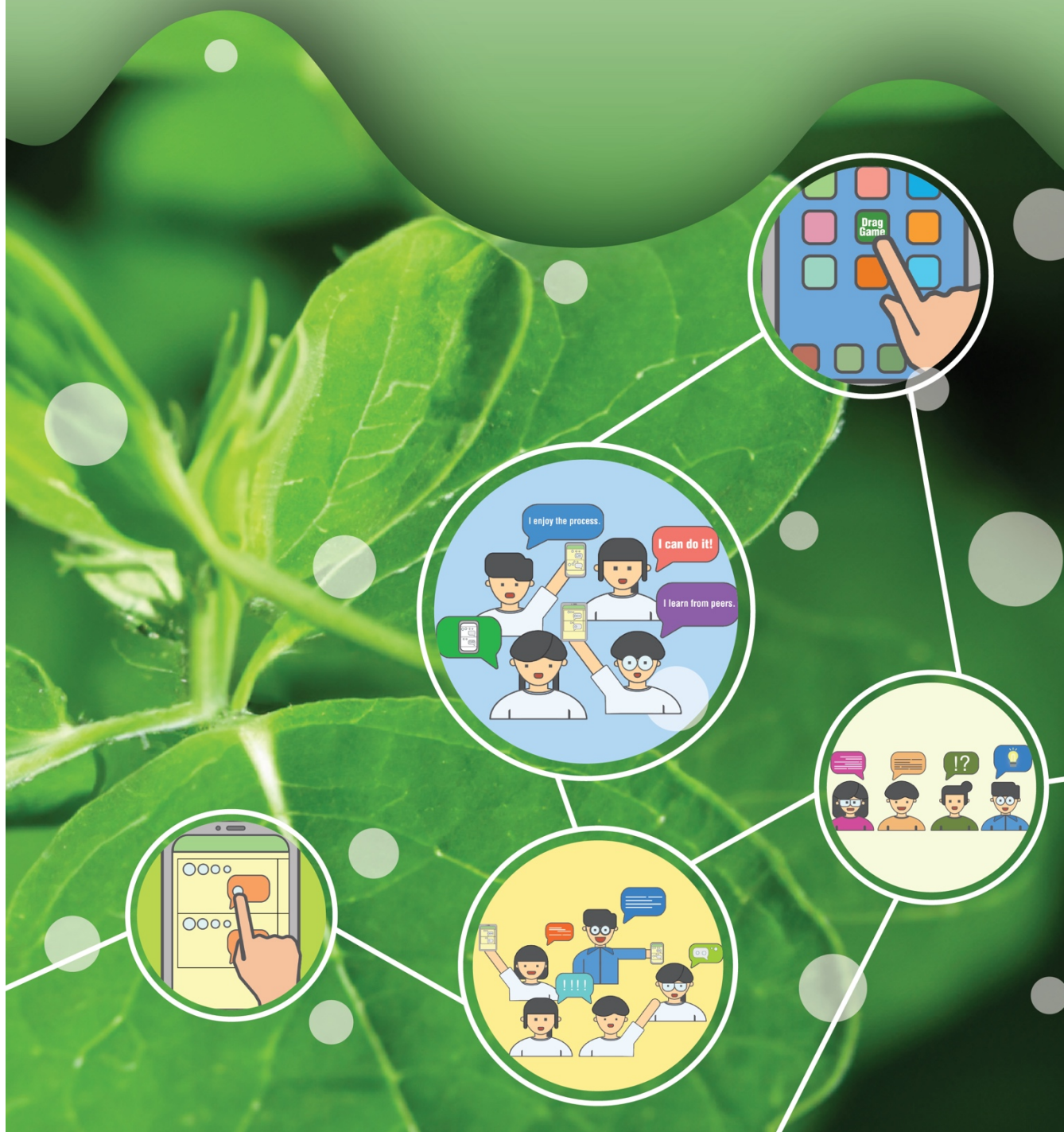


Promoting the Use of Educational Technology in Learning and Teaching in Science (S1-3) Learning and Teaching Resources

Photosynthesis



DragGame Activity

Construct a model to propose how the food is formed in photosynthesis by dragging the atoms provided below.

Materials used in photosynthesis

- Carbon dioxide (CO_2)
- Water (H_2O)

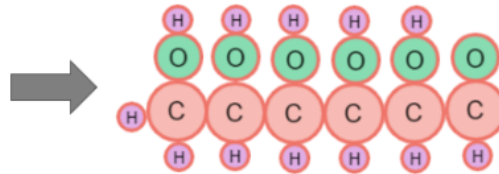
Food made in photosynthesis

- Glucose ($\text{C}_6\text{H}_{12}\text{O}_6$)

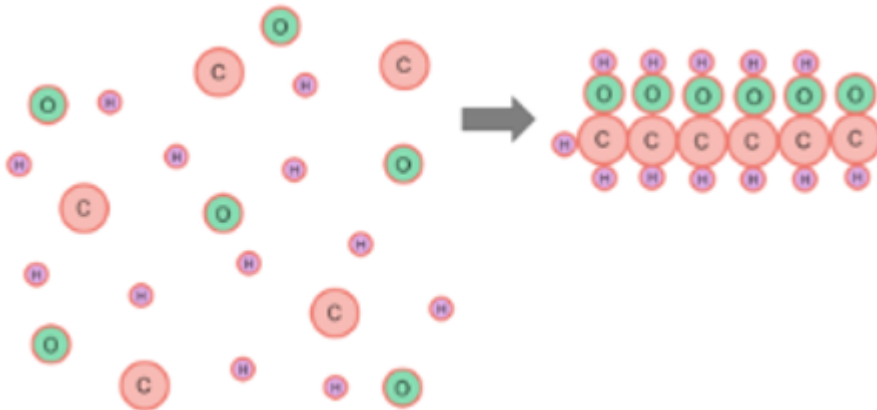


Guiding questions:

1. How does your model help you to make sense of how food is formed in photosynthesis?
2. How does your model help you to explain the source of mass of a plant?

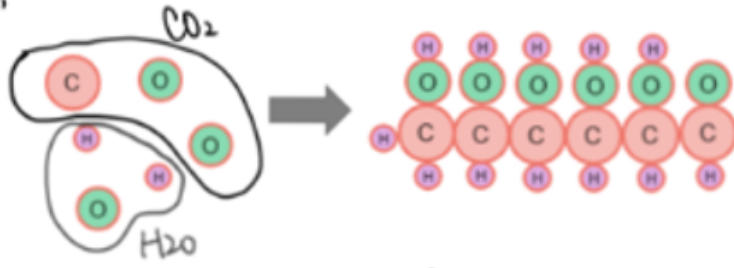


Sample 1



Sample 2

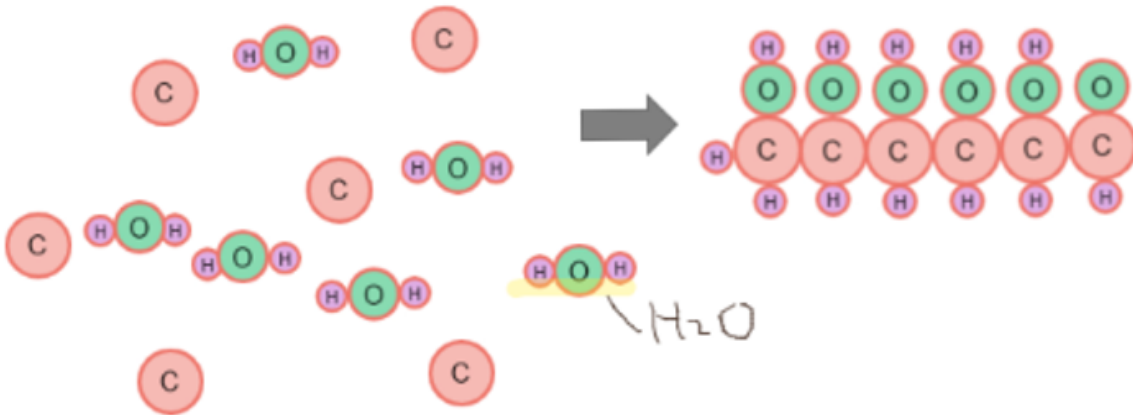
During photosynthesis, plants convert the sun's energy into chemical energy which is within the bonds of carbon molecules and



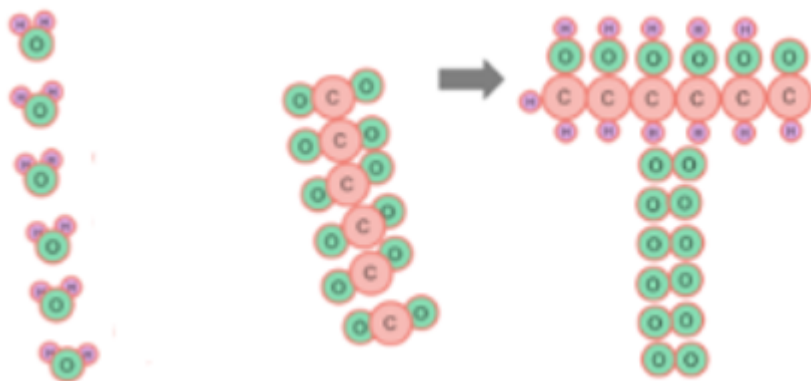
1. Water + carbon dioxide = glucose

Water + carbon dioxide and glucose is the only material needed so that's how food is formed

Sample 3



Sample 4



||

